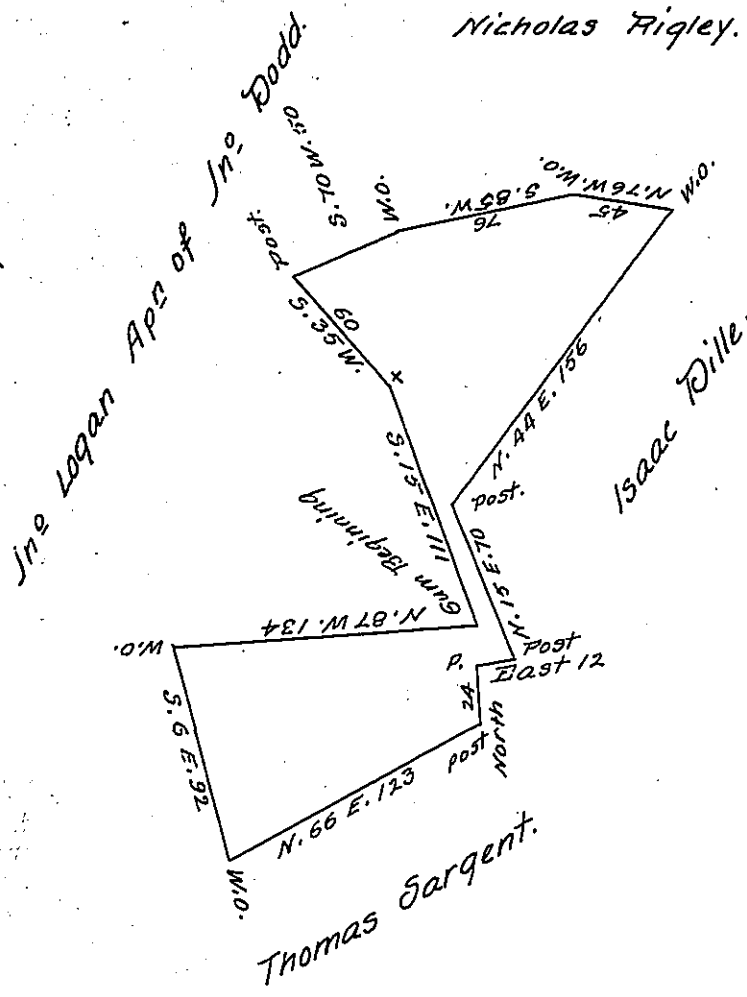


FORM NO 1.



The above is the draught of a survey made November 12th 1795 in pursuance of a warrant granted to John Whiting dated November 21st 1788 Situate on the waters of Ten mile Creek in Washington County, containing 115 acres and 113 perches and allowance, It is called Partnership

Jno Hoge, D. S.

Dan^l Brodhead Esq. S. G.

IN TESTIMONY that the above is a copy of the original remaining on file in the Department of Internal Affairs of Pennsylvania, made conformably to an Act of Assembly approved the 16th day of February, 1833, I have hereunto set my Hand and caused the Seal of said Department to be affixed at Harrisburg, this fourth day of June 1907

Henry Hawks
Secretary of Internal Affairs.